



Southwest General

Partnering with



University Hospitals

EMS Services

PRE-HOSPITAL CARE

MEDICAL CONTROL

PROTOCOLS AND PROCEDURES

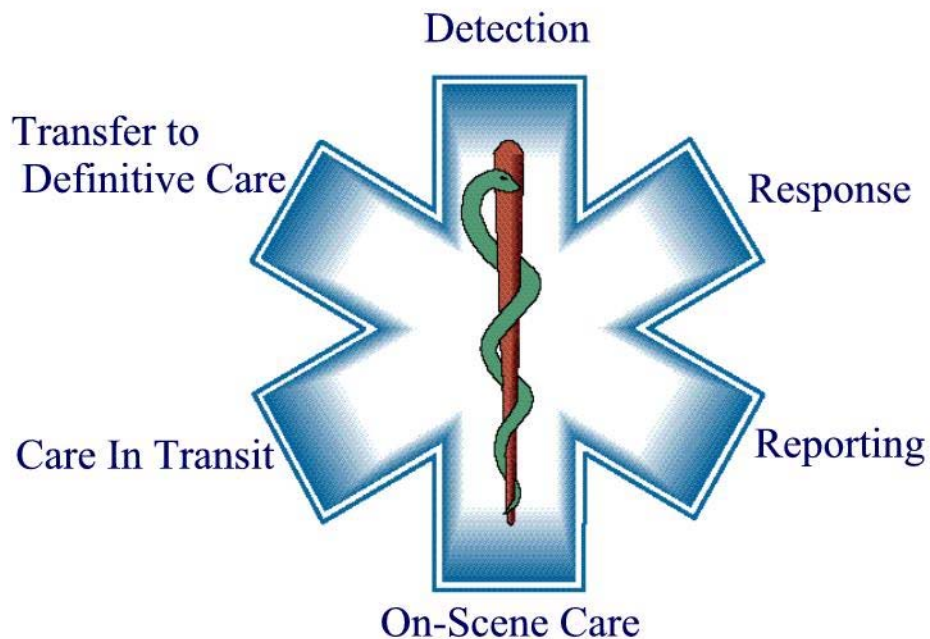


TABLE OF CONTENTS		
1. INTRODUCTION		pages
Introduction		1
S.A.F.E.S. / E.M.S. Advisory Board		2
Medical Control Protocols and Procedures		3
Acknowledgements		4
Universal Medical Care Protocol		5-6
2. MEDICAL CONTROL		pages
OVERVIEW		
EMS Levels of Certification		1
EMS Recertification Requirements		2
Ohio Public Safety Scope of Practice Standards		3-7
OPERATIONS		
EMS Communications		8
EMS Documentation / DNR Guidelines		9-11
GUIDELINES / PROCEDURES		
Aeromedical Transport		12-13
Child Abuse / Neglect		14-15
Concealed Weapons Guidelines		16
Consent and Refusal of Care Guidelines		17-18
Dead On Arrival (DOA)		19
Domestic Violence / Sexual Assault / Rape / Elder Abuse		20-21
Health Insurance Portability and Accountability Act (HIPAA)		22
Newborn Abandonment		23
Obese Patients		24
On – Scene EMT / Nurse / Physician Intervener		25-26
Termination of Resuscitation Efforts		27-28
HazMat Incident		29
Start Triage		30-31
Drug Box Exchange		32
Morphine / Valium Kit		33
Controlled Substance Report		34
Equipment Exchange		35
Cleaning Equipment		36
Quality Improvement		37-38
Internal Awareness		39-40
Offer of Assistance		41
Approved Documentation Abbreviations		42-46
Infection Control Procedures		47-58
3. AIRWAY / BREATHING PROTOCOLS		pages
Airway / Breathing Guidelines		1
Airway Adjuncts		2
Adult Airway		3
Adult Foreign Body Airway Obstruction (FBAO)		4-4A
Adult Respiratory Distress / Asthma & COPD		5-5A
Congestive Heart Failure (CHF) & Pulmonary Edema (CPCP)		6-6A
Traumatic Breathing		7

--	--

4. CIRCULATION / SHOCK PROTOCOLS	pages
Shock Guidelines	1-2
Anaphylactic Shock	3
Cardiogenic Shock	4
Hypovolemic / Neurogenic / Septic Shock	5
5. ACLS PROTOCOLS	pages
ACLS / Acute Coronary Syndrome	1-1A
Arrhythmias / ACLS / Sinus Bradycardia	2-2A
Narrow – Complex Tachycardia	3-3A
Wide – Complex Tachycardia	4-4A
Cardiac Arrest / ACLS / Cardiac Arrest	5-5A
Asystole / Pulseless Electrical Activity (PEA)	6-6A
Ventricular Fibrillation (V-FIB) / Pulseless Ventricular Activity	7-7A
Post – Resuscitation Cardiac Care	8-8A
6. MEDICAL EMERGENCIES	pages
Abdominal Pain	1-1A
Allergic Reaction	2-2A
Altered Level of Consciousness	3-3A
Behavioral / Psychiatric Emergencies	4-4A
Diabetic Emergencies	5-5A
Dialysis / Renal Patient	6-6A
Esophageal Foreign Body Obstruction	7-7A
Heat Exposure	8-8A
Hypertensive Emergencies	9-9A
Hypothermia / Frostbite	10-10A
Seizures	11-11A
Stroke / CVA	12-12A
Toxic Ingestion / Exposure / Overdose	13-13A
7. PEDIATRIC PROTOCOLS	pages
EMS and Children with Special Healthcare Needs	1
AIRWAY / BREATHING	
Pediatric Airway	2
Pediatric Foreign Body Airway Obstruction (FBAO)	3-3A
Pediatric Respiratory Distress – Upper Airway – Croup	4-4A
Pediatric Respiratory Distress – Lower Airway	5-5A
ARRYTHMIAS / ACLS	
Pediatric Sinus Bradycardia	6-6A
Pediatric Narrow – Complex Tachycardia	7-7A
Pediatric Wide – Complex Tachycardia	8-8A
CARDIAC ARREST / ACLS	
Pediatric Asystole / Pulseless Electrical Activity (PEA)	9-9A
Pediatric Ventricular Fibrillation (V-FIB) And Pulseless Ventricular Tachycardia	10-10A

7. PEDIATRIC PROTOCOLS con't	pages
MEDICAL	
Pediatric Altered Level of Consciousness	11-11A
Pediatric Diabetic Emergencies	12-12A
Pediatric Heat Illness	13-13A
Pediatric Hypothermia / Frostbite	14-14A
Pediatric Neonatal Resuscitation	15-15A
Pediatric Esophageal Foreign Body Obstruction	16-16A
Pediatric Seizure	17-17A
Pediatric Shock (Non – Traumatic)	18-18A
Pediatric Toxic Ingestion / Exposure / Overdose	19-19A
TRAUMA	
Pediatric Head Trauma	20-20A
Pediatric Multiple Trauma	21-21A
PEDIATRIC ASSESSMENT CHARTS	
Glasgow Coma Scale / Normal Vital Signs	22
Pediatric Pharmacology Review	22-30
8. TRAUMA ASSESSMENT	pages
Trauma Emergencies	1
Trauma Guidelines	2-3
Abdominal Trauma	4-4A
Burns	5-5A,B
Chest Trauma	6-6A
Drowning / Near Drowning	7-7A
Extremity / Amputation Trauma	8-8A
Eye Injury	9-9A
Head Trauma	10 -10A
Multiple Trauma	11-11A
Pain Management	12-12A
Trauma Arrest	13-13A
9. CHILDBIRTH / OBSTETRICAL EMERGENCIES	pages
Abnormal Birth Emergencies	1-1A
Obstetrical Emergencies	2-2A
Uncomplicated / Imminent Delivery	3-3A
10. Appendix:	pages
Pharmacology Review / Medications	1-2
Adenosine (Adenocard)	3
Albuterol (Proventil / Ventolin)	4
Amiodarone	5
Aspirin	6
Atropine	7
Dextrose 50% (D50)	8
Diazepam (Valium)	9
Diphenhydramine (Benadryl)	10
Dopamine (Intropin)	11
Epinephrine (Adrenalin)	12
Furosemide (Lasix)	13

MEDICATIONS con't	pages
Glucagon	14
Ketorolac (Toradol)	15
Lidocaine (Xylocaine) 2%	16
Magnesium Sulfate	17
Mark 1 Kit (Atropine and 2 PAM Chloride)	18
Morphine Sulfate	19
Naloxone (Narcan)	20
Nitroglycerin	21
Nitrous Oxide: Oxygen	22
Oral Glucose	23
Oxygen (O ₂)	24
Sodium Bicarbonate	25
Tetracaine	26
Vasopressin	27
Zofran (Ondansetron Hydrochloride)	28
11. Appendix 2: Medical Procedures	pages
Adult Patient Assessment Procedure	1
Pediatric Patient Assessment Procedure	2
AIRWAY / BREATHING	
Aerosol / Inhaler Treatments Procedures	3
Esophageal Combitube Procedure	4-5
End Tidal CO ₂ Devices Procedure	6
Intubation – Nasotracheal Procedures	7
Intubation – Endotracheal Procedures	8-10
Needle Cricothyrotomy Procedures	11
Needle Chest Decompression Procedures	12
Pulse Oximetry Procedures	13-14
Suctioning Procedures	15-16
Continuous Positive Airway Pressure (CPAP)	17-19
CIRCULATION / SHOCK	
Peripheral Intravascular (IV) Procedures	20
External Jugular Intravascular (IV) Procedures	21
Saline Lock Procedures	22
Specialized Intravascular (IV) Procedures	23 -24
Intraosseous (IO) Infusion Procedures	
Adult and Pediatric Intraosseous Procedures – EZ-IO System	
CARDIAC / ACLS	
Automated External Defibrillator (AED) Procedures	25
Cardiac Defibrillation (Manual) Procedures	26
12 – Lead Cardiac EKG Monitoring Procedures	27
Synchronized Cardioversion (Manual) Procedures	28

INTRODUCTION

1

INTRODUCTION

These protocols are for Emergency Medical Technicians (EMT's) functioning under James J. Rybak MD, Medical Director of Emergency Medicine and Phillip J. Coverdale MD, Director of Emergency Services at Southwest General Health Center. This EMS Medical Control Protocol and Procedures Manual has been developed by the Medical Directors listed above, Southwest General Health Center EMS Services, Southwest Area Fire and Emergency Services (S.A.F.E.S.) and the EMS Advisory Board. These have been developed to establish the minimum standard of care, which will be provided by all Emergency Medical Services organizations under this Medical Control.

These protocols and procedures are to be used as guidelines for operation during EMS calls that require medical direction. They are also intended to be guidelines to ensure that personnel are trained in proper pre-hospital patient care. Procedures are not considered rigid rules, but rather established standards against which EMS practice can be measured.

Treatment protocols are specific orders directing the actions pertaining to techniques and/or medications used by EMS personnel who are required to practice under direct supervision of a physician and Southwest General Health Center.

Emergency Medical Services and their personnel who wish to operate under Southwest General Health Center EMS Medical Control authority may do so only with the express written and signed authorization of their respective EMS Medical Director.

Although not identical, these protocols and procedures are derived from the State of Ohio EMS Guidelines, Cuyahoga County, Northern Medina County and Eastern Lorain County Reigons. Please note that items in this manual are subject to continuous review for the sake of providing members with the most current emergency medical information. Updates to this material may be frequent to maintain a current standard of care to benefit both the patient and the provider of emergency medical care. The bottom of the page shows when the most current version was printed. Please replace older versions with newly updated material as soon as it is issued. Once updated, older versions are to be considered obsolete and thus, are to be discarded to help eliminate confusion. The EMS Advisory Board will review the procedures on a regular basis and will add and/or update this document after review, as mandated by the chairperson of the EMS Advisory Board. Questions regarding procedures as stated in this document can be addressed to any member of the Southwest General Health Center EMS Advisory Board.

INTRODUCTION

2

S.A.F.E.S. / EMS ADVISORY BOARD

Southwest General Health Center works in conjunction with the The Southwest Area Fire and Emergency Services (S.A.F.E.S.) and the EMS Advisory Board. These protocols and precedures have been developed to facilitate the orderly working of the Emergency Medical Services within Southwestern Cuyahoga County, Northern Medina County, and Eastern Lorain County. The structure for the organizations are:

1. The Fire Chief from each community within the Southwest General Health Center EMS System will serve on the S.A.F.E.S. Committee. An appointed individual by the Fire Chief to serve on the EMS Advisory Board.
2. The Medical Directors will be a permanent member of the board.
3. The EMS Coordinator will be a member of the board.
4. The Emergency Department will designate a member of the board.
5. Health Center Administration will designate a member of the board.
6. A member of the Southwest Area Fire / Emergency Service (S.A.F.E.S.) will be a liason member of the board.

The S.A.F.E.S. and EMS Advisory Board will meet the first Thursday of the month with no less than six meetings to be held per year.

**MEDICAL CONTROL PROTOCOLS AND
PROCEDURES GUIDELINES**

1. The patient history should not be obtained at the expense of the patient. Life-threatening problems detected during the primary assessment must be treated first.
2. Cardiac arrest due to trauma is not treated by medical cardiac arrest protocols. Trauma patients should be transported promptly with CPR, control of hemorrhage, cervical spine immobilization, and other indicated procedures attempted enroute.
3. In patients with non-life-threatening emergencies who require IV's, only two attempts at IV insertion should be attempted in the field, additional attempts must be enroute.
4. Patient transport, or other needed treatments, must not be delayed for multiple attempts at endotracheal intubation.
5. Verbally repeat all orders received before their initiation.
6. Any patient with a cardiac history, irregular pulse, unstable blood pressure, dyspnea, or chest pain must be placed on a cardiac monitor and a copy of the EKG must be attached to the EMS Run Sheet.
7. Transferring patient care should be performed between caregivers describing initial patient presentation and care rendered to the point of transfer.
8. If the patient's condition does not seem to fit a protocol or protocols, contact Medical Control for guidance.
9. All trauma patients with mechanisms or history for multiple system traumas will be transported as soon as possible. The scene time should be 10 minutes or less.
10. Medical patients will be transported in the most efficient manner possible considering medical condition. Advanced life support therapy should be provided at the scene if it would positively impact patient care. Justification for scene times greater than 20 minutes should be documented.

**USE SIGNATURE
SHEET WITH
SIGNATURES. SENT
VIA MAIL.**

E.M.S. Coordinator

President of Southwest Area
Fire and Emergency Services

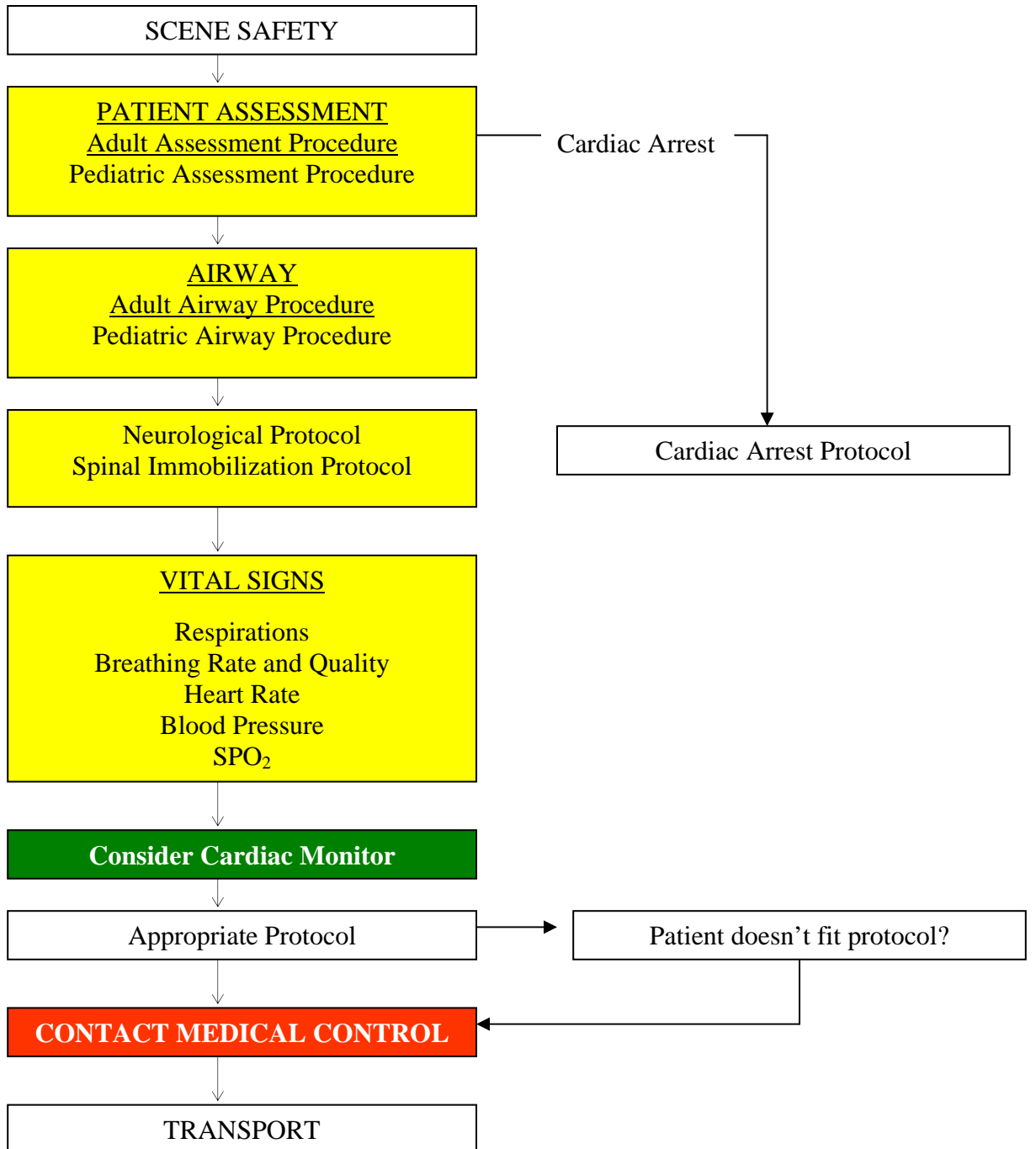
Captain Oscar Skavdahl
President of the E.M.S. Advisory Board

Thanks to the Associates of the E.M.S. Department of Southwest General Health Center along with the many dedicated Pre-Hospital Care Providers in our region who have given endless hours towards protocol development.

INTRODUCTION

UNIVERSAL MEDICAL CARE PROTOCOL

B	EMT-B	B
I	EMT-I	I
P	EMT-P	P
M	MED CONTROL	M



- Any patient contact, which does not result in an EMS transport, must have documentation.
- The Broselow-Luten tape defines a pediatric patient. If the patient does not fit on the tape, they are considered an adult.
- Timing of transport should be based on patient's clinical condition and the transport policy.

General

- All patient care and documentation must be appropriate for your level of training and within the standard of care of the State of Ohio.
- Only functioning paramedics can perform ALS procedures.
- Use the standard AHA guidelines for CPR and rescue breathing.
- It may be necessary to reference several protocols while treating a patient.
- Refer to the appropriate protocol and provide the required interventions as indicated.
- Additional focus may be needed in specific areas as indicated by the patient's chief complaint.
- Airway management and oxygen administration should be initiated based upon the results of the patient assessment and the protocols.
- IV's should be initiated in all patients based upon the results of the patient assessment, and the Intravenous Access Procedure.
- Administer cardiac monitoring (3-Lead) and perform a 12-Lead EKG based upon the results of the patient assessment or the protocols.
- If indicated and possible, perform a 12-Lead EKG before moving to the squad and before any medication administration.
- When assessing for pain, use a 0-10 pain scale; 0 = no pain; 10 = worst pain ever experienced.
- It is mandatory to document the reason why an intervention was not performed if it was indicated.

Adult

- Patients who are taking beta-blockers may not have an elevated heart rate, but may be in shock.
- General weakness can be a symptom of a life threatening illness.
- Hip fractures and dislocations in the elderly have a high mortality rate.
- What would be considered a minor or moderate injury in the adult patient can be life threatening in the elderly.
- Diabetic patients may have abnormal presentations of AMI and other conditions due to neuropathy.
- A medical cardiac arrest is not a "load and go" situation. It is in the best interest of the patient to perform all initial interventions (Defib, CPR, ETT, IV) and 1-2 rounds of medications prior to extrication.
- An adult patient is considered hypotensive if their systolic BP is 90 or less.
- An elderly patient (70 or older) is considered hypotensive if their systolic BP is 120 or less.
- Assess the patient every 300 mL of normal saline, and continue with fluid resuscitation until it is no longer indicated.

Pediatric

- Assess the pediatric patient after every 20 mL/kg fluid bolus of normal saline, and continue with fluid resuscitation until it is no longer indicated.
- Refer to the Pediatric Intraosseous Procedure, if indicated.
- It may be necessary to alter the order of the assessment (except for the Initial Assessment) based upon the developmental stage of the patient.
- A pediatric trauma patient is any trauma patient who is 15 years old or younger.