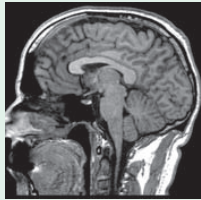




What is MRI?



MRI stands for **Magnetic Resonance Imaging**. It is one of the safest, most comfortable imaging techniques available.

MRI does not rely on the type of radiation used for an X-ray or CT scan. Instead, MRI uses a powerful magnetic field, high frequency radio waves and an advanced computer system. This extraordinary imaging device creates clear and precise images of a wide variety of anatomical structures within the body. These images are used to diagnose and plan treatment for various medical conditions.

Your doctor may order an **MRA**. This is a unique technique used in MRI to obtain images of the blood vessels within the body. This technique is also called **Magnetic Resonance Angiography**.

To make an appointment, cancel, or reschedule, please call MRI Scheduling at 440-816-4555.

Appointment time

Appointment date

18697 Bagley Road
Middleburg Heights, OH 44130

www.swgeneral.com

MRI Patient Information



How should I prepare?

In most cases, there are no special preparations necessary for an MRI exam. There are no food or drink restrictions, and you may continue to take any medications, unless otherwise directed. If you are having a scan of your abdomen, you may be asked *not* to eat or drink several hours before your exam.

You should wear comfortable clothing *without* metal snaps, zippers, buttons, belts or buckles. Gowns will be provided if needed. You will not be allowed to wear anything metallic during the MRI exam. Therefore, it is best to leave watches, jewelry or anything made from metal at home.

Before the MRI procedure, you will be required to complete a medical history form and a safety checklist. These are designed to aid the technologist in scanning techniques and identifying anything that might create a health risk, or interfere with the imaging process. Because your safety is our number one priority, a member of our staff will ask a series of additional questions to ensure that the information provided is correct.

Contact a member of our staff if you have questions or concerns about any implanted object or health condition that could impact the MRI procedure. This is particularly important if you have undergone surgery involving the brain, ear, eye, heart or blood vessels.

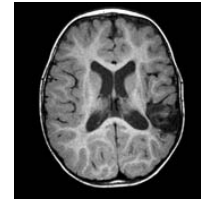
A patient **cannot** under go an MRI Scan if they have:

- Brain aneurysm clips
- A pacemaker
- Metal fragments in one or both eyes
- Cochlear (Inner Ear) implants
- An implanted spinal cord or brain stimulating device

Please notify your doctor or a member of the MRI staff if you are pregnant or may become pregnant before your scheduled appointment.

During the MRI exam

The MRI examination is performed in a special room that houses the MR system or “scanner”. You will be asked by a staff member to lie on a comfortably padded table. If applicable, the staff member will place a device on or near the body part of interest. This device aids in the collection of information used to produce the images. Once positioned, we will slide the table into the scanner, so that the area of interest is in the center of the magnet.



As the images are being acquired, you will hear a variety of loud ‘knocking’ noises. These noises are normal and are caused by small magnets being turned on and off during the exam. Ear protection will be provided to you in the form of earplugs and/or headphones. We are able to play a wide variety of music for you during your exam, or you may choose to bring a favorite CD of your own.

The MRI Technologist is able to speak to, hear and observe you at all times. Please notify the Technologist if you have any questions, concerns or feel anything unusual during your exam.

Will I need an injection?

For some MRI studies, a contrast agent called “Gadolinium” may be required to provide clearer images. This is done, by a qualified member of our staff, using a small needle and placing it into the arm or hand. Unlike contrast agents used in X-ray and CT, MRI contrast agents do not contain iodine and, therefore, rarely cause allergic reactions or other health problems.



How long will my exam take?

The *most important* thing for you to do is **relax** and **lie very still**. Minimizing motion will provide clear and precise images and help reduce the exam time. Most MRI exams take between 15 and 45 minutes to complete depending on the body part being scanned and the number of images needed, although some may take longer. You will be told ahead of time just how long your scan is expected to take.

After my exam

Once your exam is complete, you may resume your normal diet, medications and activities. If you have been given an injection of contrast, please drink plenty of water for the next 24 hours. This will help eliminate the contrast from your body. No other changes will be noticed.

Exam Results

The images taken during the exam will be interpreted by a Radiologist, a specially-trained physician. Please make arrangements with your doctor to discuss the results. If you would like to request a copy of your images, please notify the staff the day of your appointment or you may call our film library at **440-816-2702**.

Locations

Southwest General has three MRI locations:

Lifeworks Imaging Center

7390 Old Oak Blvd.
Middleburg Heights, OH 44130

Southwest Imaging Center

Specializing in Musculoskeletal Imaging
15900 Snow Road
Brook Park, OH 44142

Main Campus (Hospital)

18697 Bagley Road
Suite C-109
Middleburg Heights, OH 44130